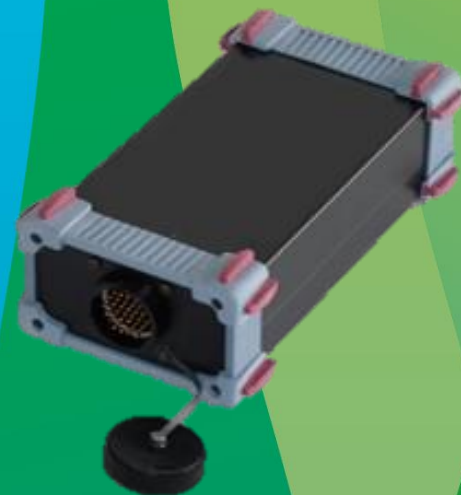


DETECTION OF INJECTOR LEAKAGE



Bosch Engineering Test & Control Devices

Detection of Injector Leakage

► Use case

- Detection of injector leakage during service of common-rail engines

► Features

- Injector **individual** fault detection during corrective or preventive maintenance
- **Accurate** and **fast** identification of the solenoid injector with increased leakage
- Can be **integrated** in OEM workshop tester environment

time savings

thanks to significant reduction of troubleshooting time due to fast diagnostic procedure

cost savings

thanks to less need of spare parts due to exact pinpointing of corrupt solenoid injector



Bosch Engineering Test & Control Devices

Detection of Injector Leakage

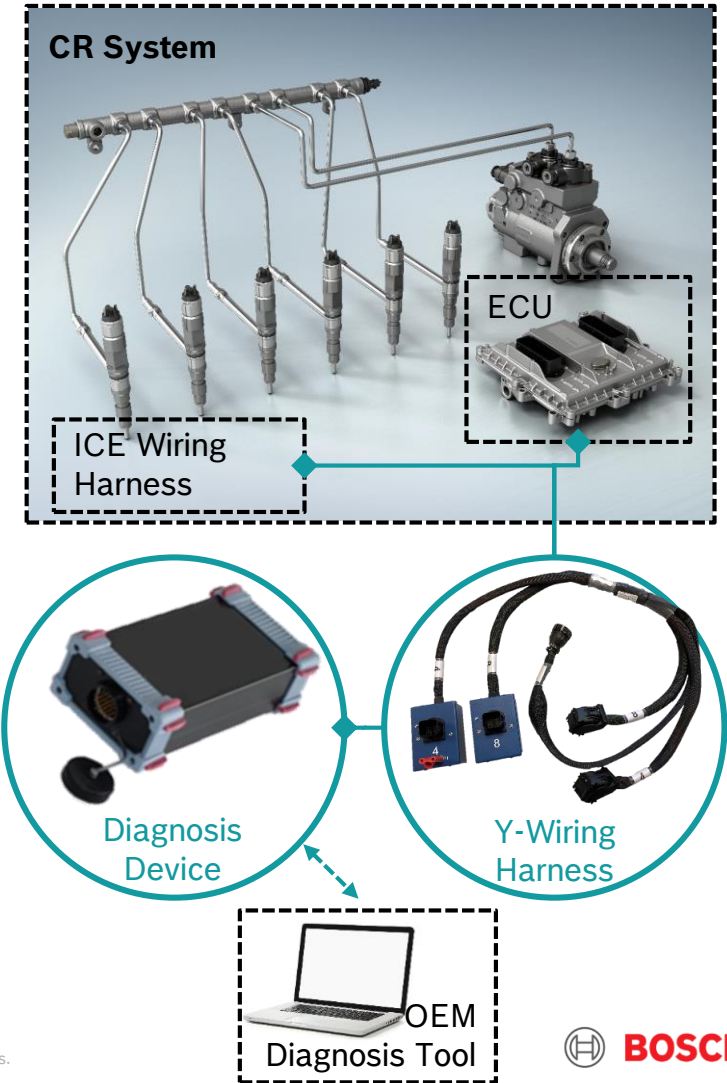
- ▶ Measuring method
 - Connection of diagnosis device **direct** between ICE wiring harness and ECU (using the Y-wiring harness)
 - Determination of wear increased backflow of the **individual** solenoid injector
- ▶ Measuring features
 - **Adaptable** to different ECUs / solenoid injectors
 - **Applicable** also for non-accessible backflow line
 - **Communication** with OEM diagnosis tool

safe and clean

no intervention in hydraulic system as no disassembling of common rail system necessary

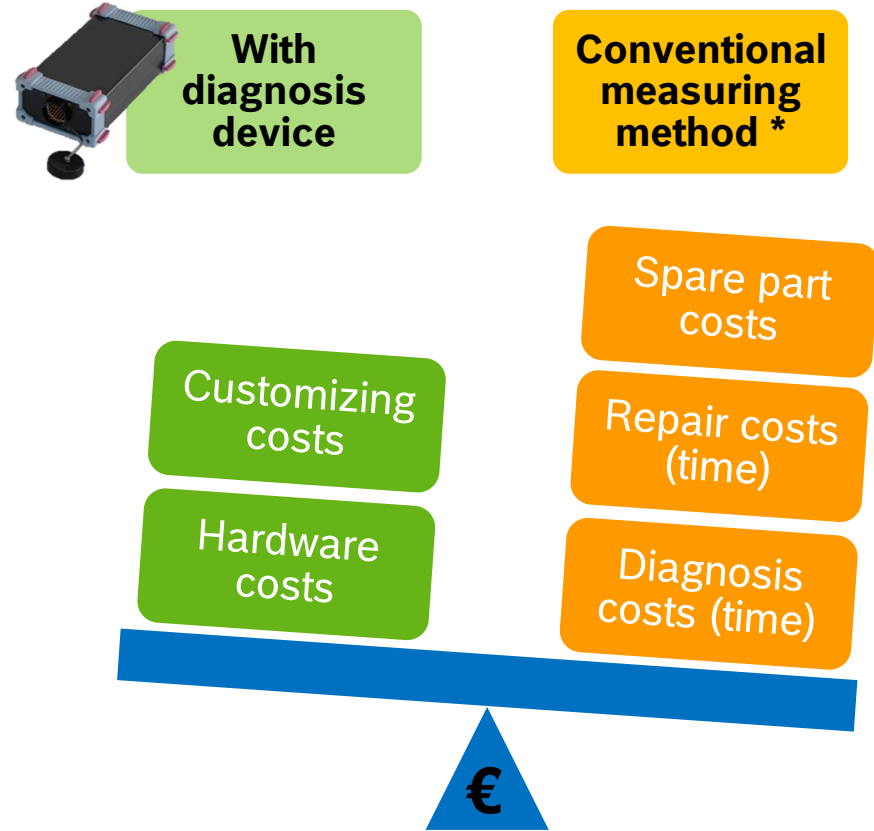
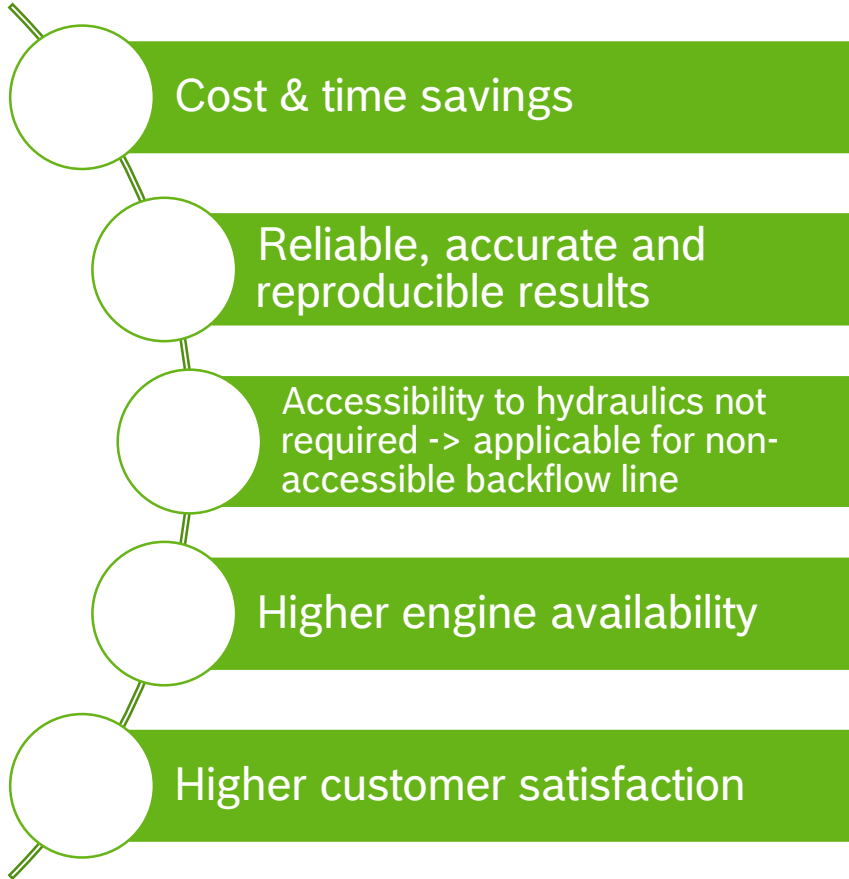
fast and easy

thanks to direct connection between ICE wiring harness and ECU



Bosch Engineering Test & Control Devices

Main Advantages



* Manual measurement via leakage tubes, removal and testing on injector test bench or exchange of all injectors

THANK YOU!

Jonathan Böttger (BEG/EME4)

Jonathan.Boettger@de.bosch.com

+49 8024 973 1489

www.bosch-engineering.de

