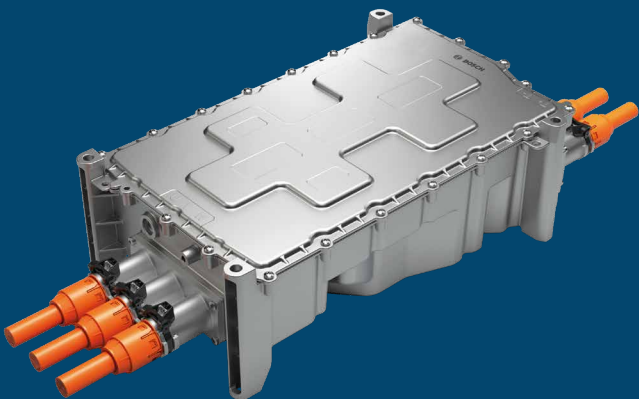




Energy

Fourth-generation inverter

Efficient solution for electrically operated recreational and working boats



Up to 99% efficiency

The use of silicon carbide technology enables a greater electric range or, alternatively, a reduction of the necessary battery capacity.

High power output

800 V technology enables peak power outputs of up to 360 kW.

- The fourth-generation inverter from Bosch Engineering was adopted from large-volume production for commercial vehicles and modified to meet the specific requirements of mobile machinery and marine applications.
- The inverter thus fulfills all the relevant requirements and safety functions of the Machinery and Recreational Craft Directives.
- With its electronic control and monitoring of the corresponding motor – the SMG 230 – the inverter provides a safe and consumption-optimized electrical supply for the electric drive.

